

An aerial photograph showing a mix of urban and natural environments. In the upper left, there is a large shopping center with various retail stores like Next, Matala, and Matala. A large parking lot is filled with cars. To the right, a road with a red bus and other vehicles is visible. In the foreground and middle ground, there is a natural area with a pond, reeds, and many trees, some of which are bare, suggesting a cooler season. The overall scene illustrates the integration of nature into an urban setting.

# **Urban Beavers & Thriving Communities**

The Ealing Beaver Project &  
London's Future

*Dr Sean McCormack & Elliot Newton*



**Citizen  
ZOO**

**THE EALING  
BEAVER  
PROJECT** 

  
**Horsenden**

 **Ealing**  
[www.ealing.gov.uk](http://www.ealing.gov.uk)



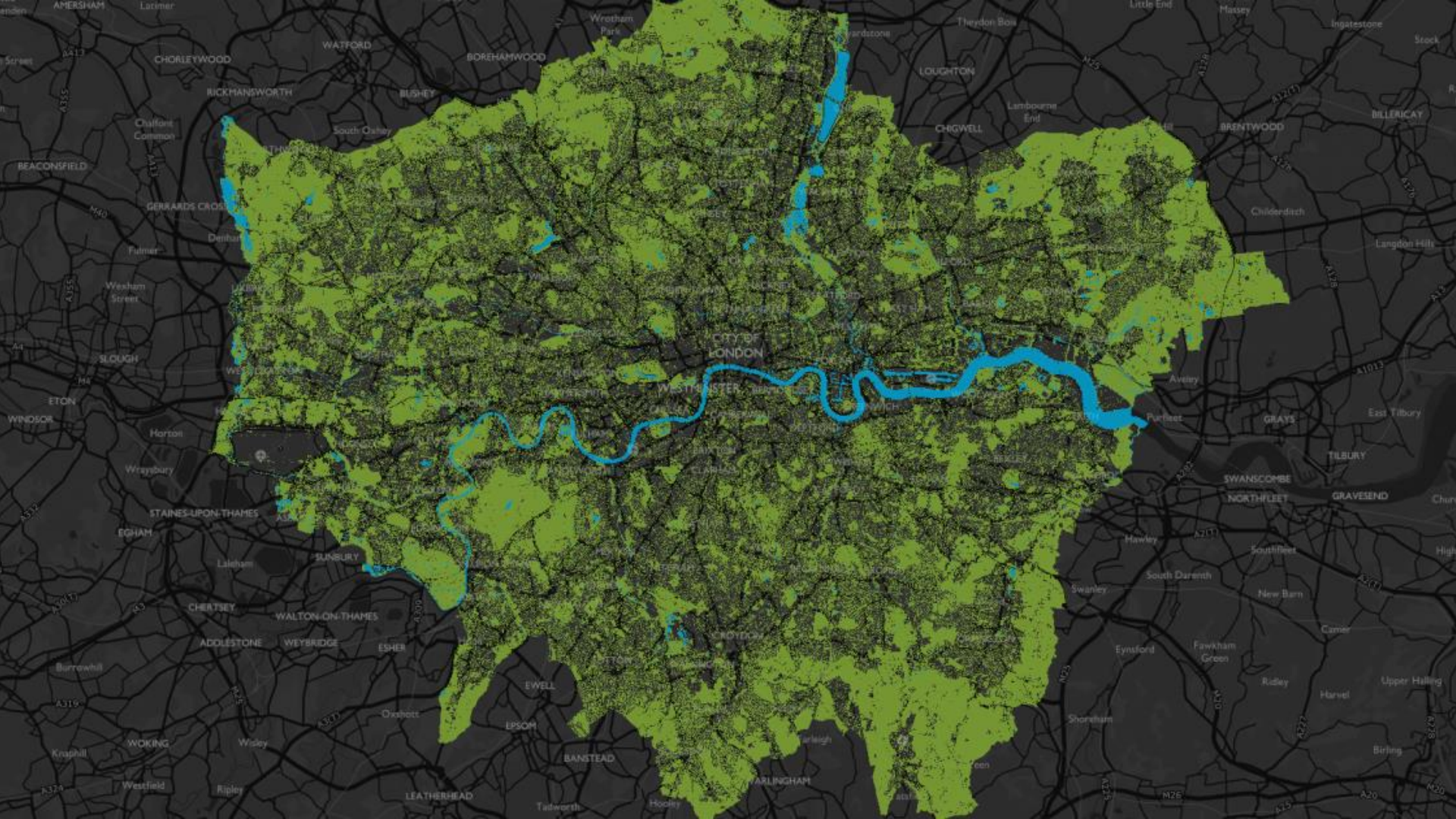
**BEAVER  
TRUST**

SUPPORTED BY

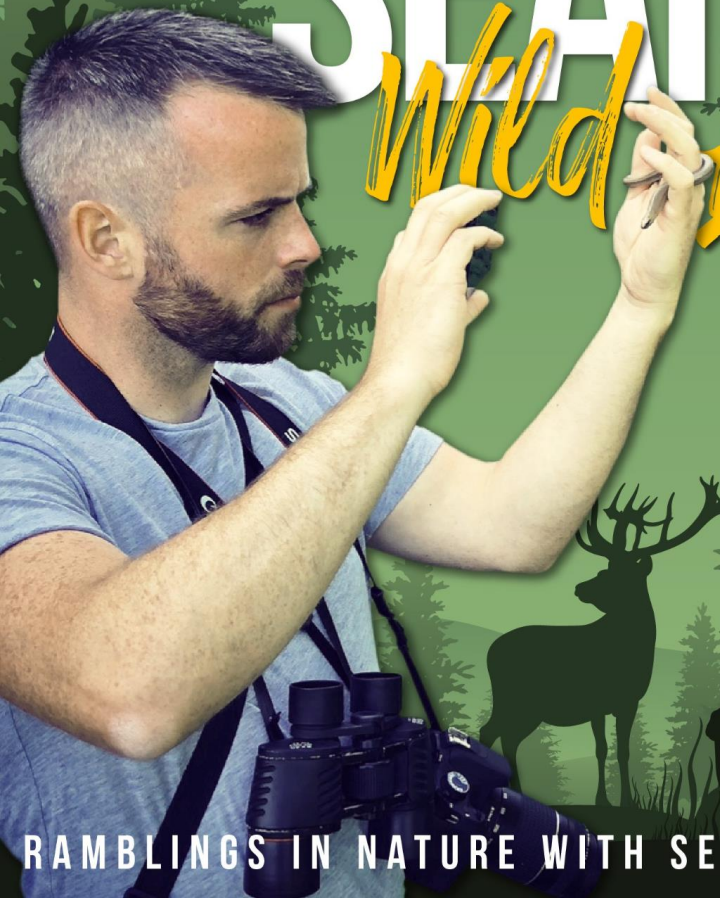
**MAYOR OF LONDON**







# SEAN'S *Wild Life*



RAMBLINGS IN NATURE WITH SEAN MCCORMACK











Infiltration Testing

Runoff Calculations

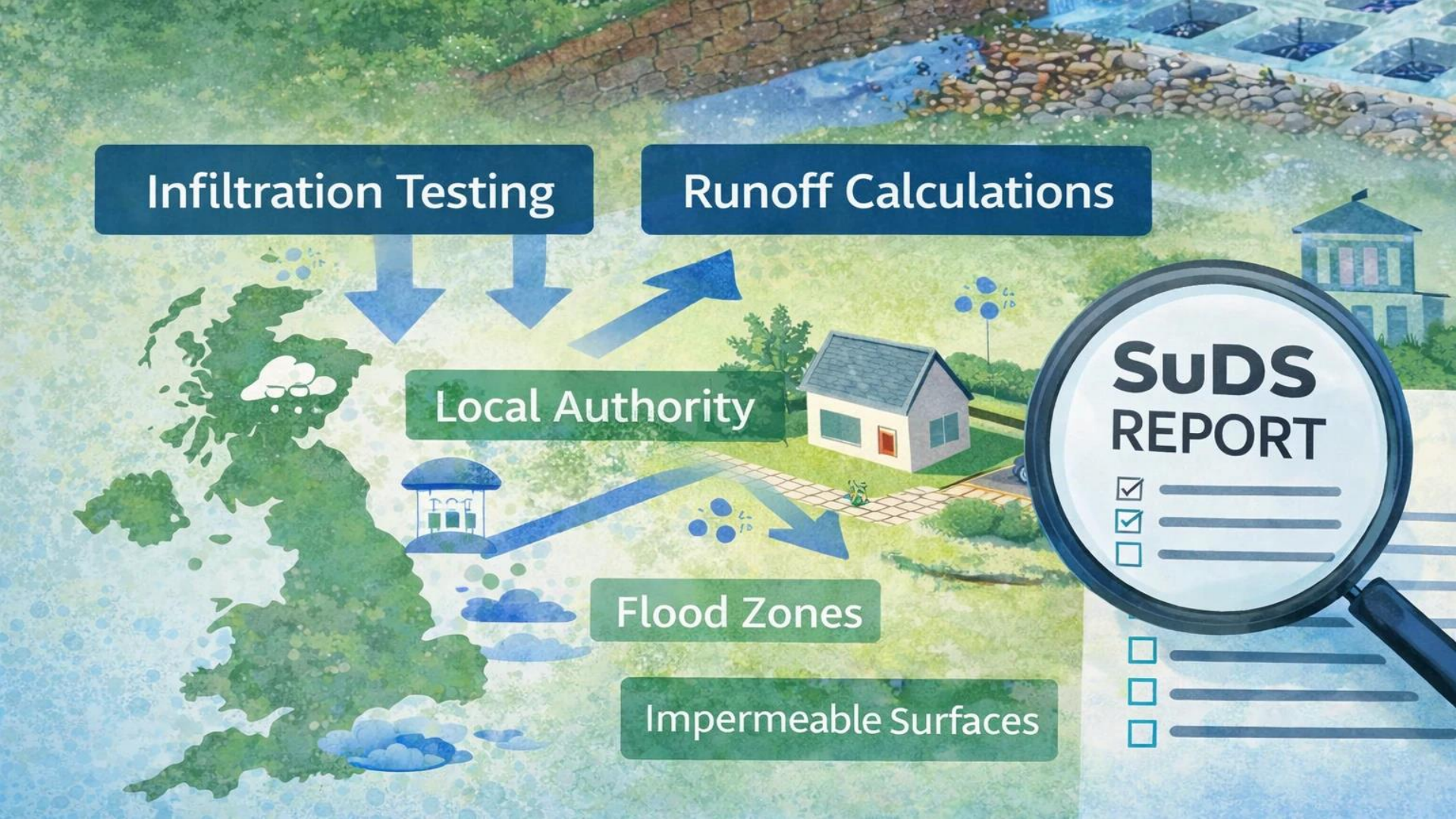
Local Authority

Flood Zones

Impermeable Surfaces

**SuDS  
REPORT**

- \_\_\_\_\_
- \_\_\_\_\_
- \_\_\_\_\_
- \_\_\_\_\_
- \_\_\_\_\_
- \_\_\_\_\_



**THE EALING  
BEAVER  
PROJECT** 























### PARADISE FIELDS

Responsible Planning. Positive Impact. The Ealing Beaver Project. The Ealing Beaver Project is a community-led initiative to create a beaver habitat in Ealing, London. The project is a partnership between the Ealing Council, the Ealing Beavers Society, and the Ealing Beavers Project. The project is a partnership between the Ealing Council, the Ealing Beavers Society, and the Ealing Beavers Project.

#### THE EALING BEAVER PROJECT

The Ealing Beavers Project is a community-led initiative to create a beaver habitat in Ealing, London. The project is a partnership between the Ealing Council, the Ealing Beavers Society, and the Ealing Beavers Project.

#### A SPACE FOR PEOPLE TO ENJOY URBAN NATURE

Beavers are a fantastic addition to an urban landscape. They help to improve water quality, create habitats for other wildlife, and provide a space for people to enjoy urban nature. The Ealing Beavers Project is a community-led initiative to create a beaver habitat in Ealing, London.

#### SITE MAP

The site map shows the location of the beaver habitat in Ealing, London. It is a yellow area with a blue line representing the beaver habitat. The map is titled 'SITE MAP' and 'EALING'.

At the bottom of the sign, there are logos for the Ealing Council, the Ealing Beavers Society, and the Ealing Beavers Project.









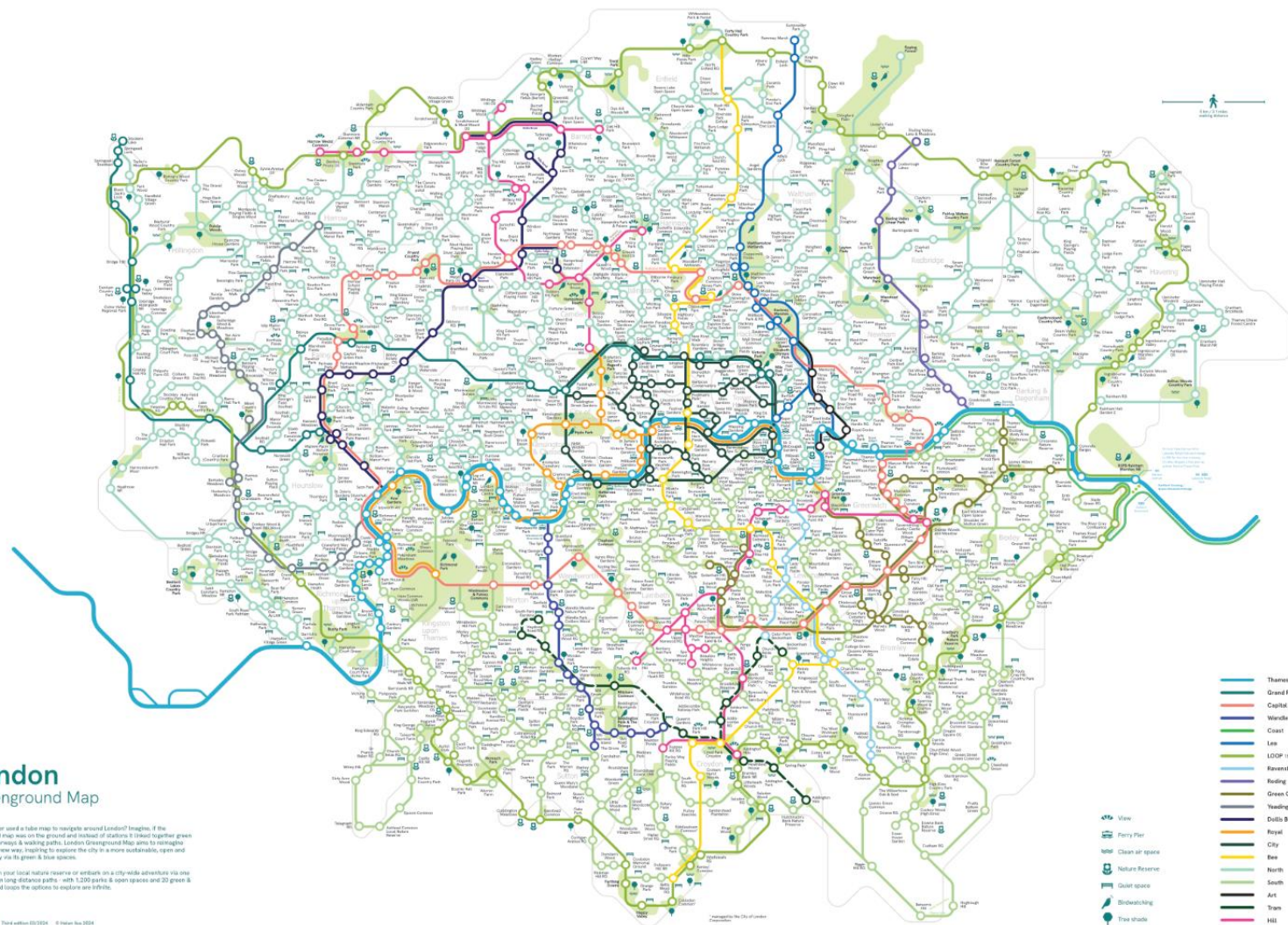
# Beaver Believers

\*based on a nearly true story

By Dr. Sean McCormack  
illustrated by Siski Kalla







# London Greenground Map

Have you ever used a false map to navigate around London? Imagine, if the underground map was on the ground and instead of stations it showed together green spaces, waterways & walking paths. London Greenground Map aims to reimagine London in a new way, helping to explore the city in a more sustainable, open and beautiful way via its green & blue spaces.

Connect with your local nature reserve or embark on a city-wide adventure via one of the London long-distance paths - with 1,200 parks & open spaces and 30 green & blue trails and loops the options to explore are infinite.

- Thames
- Grand Regent
- Capital Ring 25 miles (24km)
- Wandse
- Coast
- Lee
- Lee
- LDOF 150 miles (243km)
- Ravensbourne
- Riding
- Green Chain 60 miles (97km)
- Yaxley Downs
- Dulles Brent
- Royal
- City
- Bee
- North
- South
- Art
- Tram
- Hill

- View
- Perry Pier
- Clean air space
- Nature Reserve
- Golf course
- Biodiversity
- Tree shade

MAYOR OF LONDON

# London Local Nature Recovery Strategy

## Statement of Biodiversity Priorities

## Foreword



**A healthy natural environment underpins everything we do. Without it, we wouldn't have clean air to breathe, healthy food to eat or green spaces to enjoy. Nature is essential for our health and wellbeing and provides a vital home for local wildlife. It also builds our resilience to the climate crisis by cooling our cities and reducing the risk of flooding. Yet despite its immense value, nature is in decline globally, and the UK is one of the most nature-depleted countries in the world.**

London is one of the world's greenest cities – green and blue spaces make up 52 per cent of the city's surface area. From ancient woodlands to chalk streams, to internationally important sites for stag beetles and wetland birds, our city boasts an incredible plethora of nature. And our parks, rivers and woodlands enrich the daily lives of Londoners. They're where we relax, exercise, play and enjoy the capital's amazing natural heritage and culture. But we know that not all Londoners benefit equally – with people from ethnic minority backgrounds, as well as those affected by poverty and deprivation, less likely to have access to sufficient green space.

Since 2016, I've worked hard to make London greener and fairer by enhancing and protecting nature for the benefit of both Londoners and the environment. We've created the world's largest clean air zone and invested more than £30m in nature and greening. We've reintroduced beavers to Enfield and Ealing and become the world's first National Park City. We've planted more than 600,000 trees, started a rewilding revolution, invested millions in green jobs, and transformed our capital into a global centre for green finance.

I'm proud that in London, we're leading the way. But I want to do more, which is why I'm making sure our first ever Local Nature Recovery Strategy (LNRS) will support our valuable work across London.



Guidance

## Beavers: releasing native beavers into secure enclosures

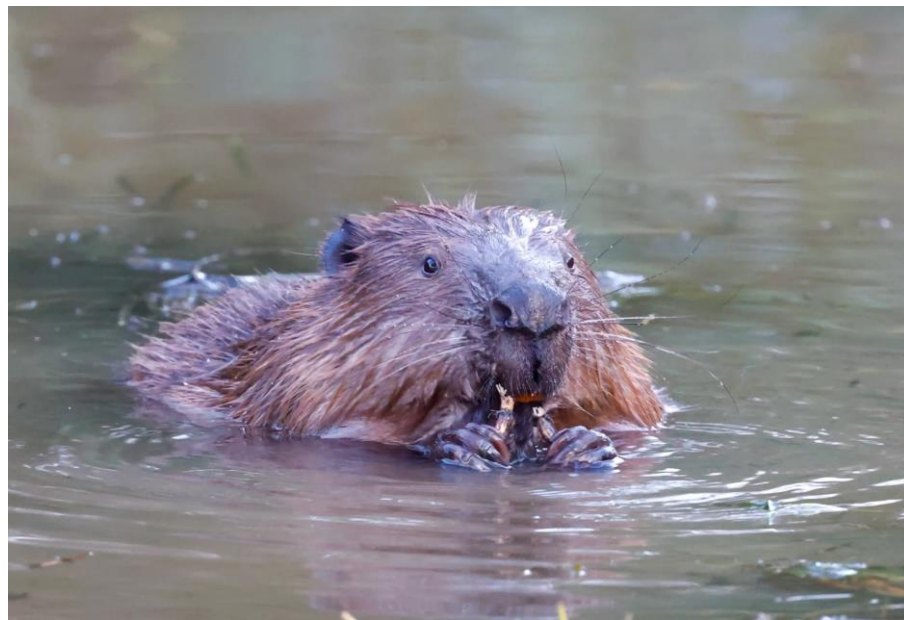
How to apply for a licence to release Eurasian beavers into secure enclosures in England.

---

From: [Natural England](#)

Published 18 August 2025

1. There must be likely exceptional environmental benefits that cannot be reasonably achieved by other means, including by a wild release of beavers. An example of this could be the restoration of a protected site in unfavourable condition. There must be strong evidence of the purpose – the need for the project, the ability of beavers to meet that need, and why there are no satisfactory alternatives.
2. The design and construction of the enclosure must ensure that the likelihood of escapes is low. The whole enclosure must be securely fenced. You cannot normally use enclosures made from a combination of fencing and natural topography. These are not secure and will not prevent beavers from escaping into the wild.



4. You must carry out meaningful engagement with local communities, including land and riparian managers, and achieve widespread support.

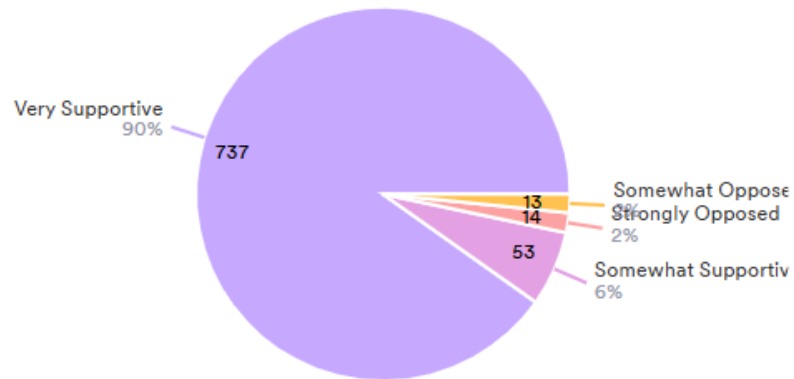


# CROYDON

[www.croydon.gov.uk](http://www.croydon.gov.uk)

## How do you feel about the idea of beavers at South Norwood Country Park?

817 Answers



- Very Supportive
- Somewhat Supportive
- Strongly Opposed
- Somewhat Opposed







**“If someone had told me when I first moved here that one day I’d be watching wild beavers in London, I’d have thought they were mad. But there they are, right behind me. Happily going about their own business”**



# THE EALING BEAVER PROJECT

